



REGIONAL SPECIALISED METEOROLOGICAL CENTRE -TROPICAL CYCLONES, NEW DELHI TROPICAL WEATHER OUTLOOK

DEMS-RSMC TROPICAL CYCLONES NEW DELHI DATED 24.08.2025

TROPICAL WEATHER OUTLOOK FOR THE NORTH INDIAN OCEAN (THE BAY OF BENGAL AND THE ARABIAN SEA) VALID FOR THE NEXT 168 HOURS ISSUED AT 0600 UTC OF 24.08.2025 BASED ON 0300 UTC OF 24.08.2025.

BAY OF BENGAL:

Yesterday's Low pressure area over Gangetic West Bengal & neighbourhood moved west northwestwards, lay over northeast Madhya Pradesh & neighbourhood at 0300 UTC of 24th August, 2025. The associated upper air cyclonic circulation extended upto 7.6 km above mean sea level tilting southwards with height. It is likely to move west northwestwards during next 24 hours and weaken gradually thereafter.

A fresh low-pressure area is likely to form over northwest Bay of Bengal off Odisha-West Bengal coasts during next 48 hours.

Scattered to broken low and medium clouds with embedded intense to very intense convection lay over north, central & southeast Bay of Bengal and Andaman Sea. Scattered to broken low and medium clouds with embedded isolated moderate to intense convection lay over southwest Bay of Bengal.

***PROBABILITY OF CYCLOGENESIS (FORMATION OF DEPRESSION) DURING NEXT 168 HRS:**

24 HOURS	24-48 HOURS	48-72 HOURS	72-96 HOURS	96-120 HOURS	120-144 HOURS	144-168 HOURS
NIL	NIL	NIL	NIL	NIL	NIL	NIL

***NOTE: EVERY 24HR FORECAST IS VALID UPTO 0300 UTC (0830 IST) OF NEXT DAY**

ARABIAN SEA:

Scattered low and medium clouds with embedded isolated moderate to intense convection lay over northeast Arabian Sea and isolated weak to moderate convection lay over rest parts of the Arabian Sea, Lakshadweep Island area, Maldives & Comorin Area.

***PROBABILITY OF CYCLOGENESIS (FORMATION OF DEPRESSION) DURING NEXT 168 HRS:**

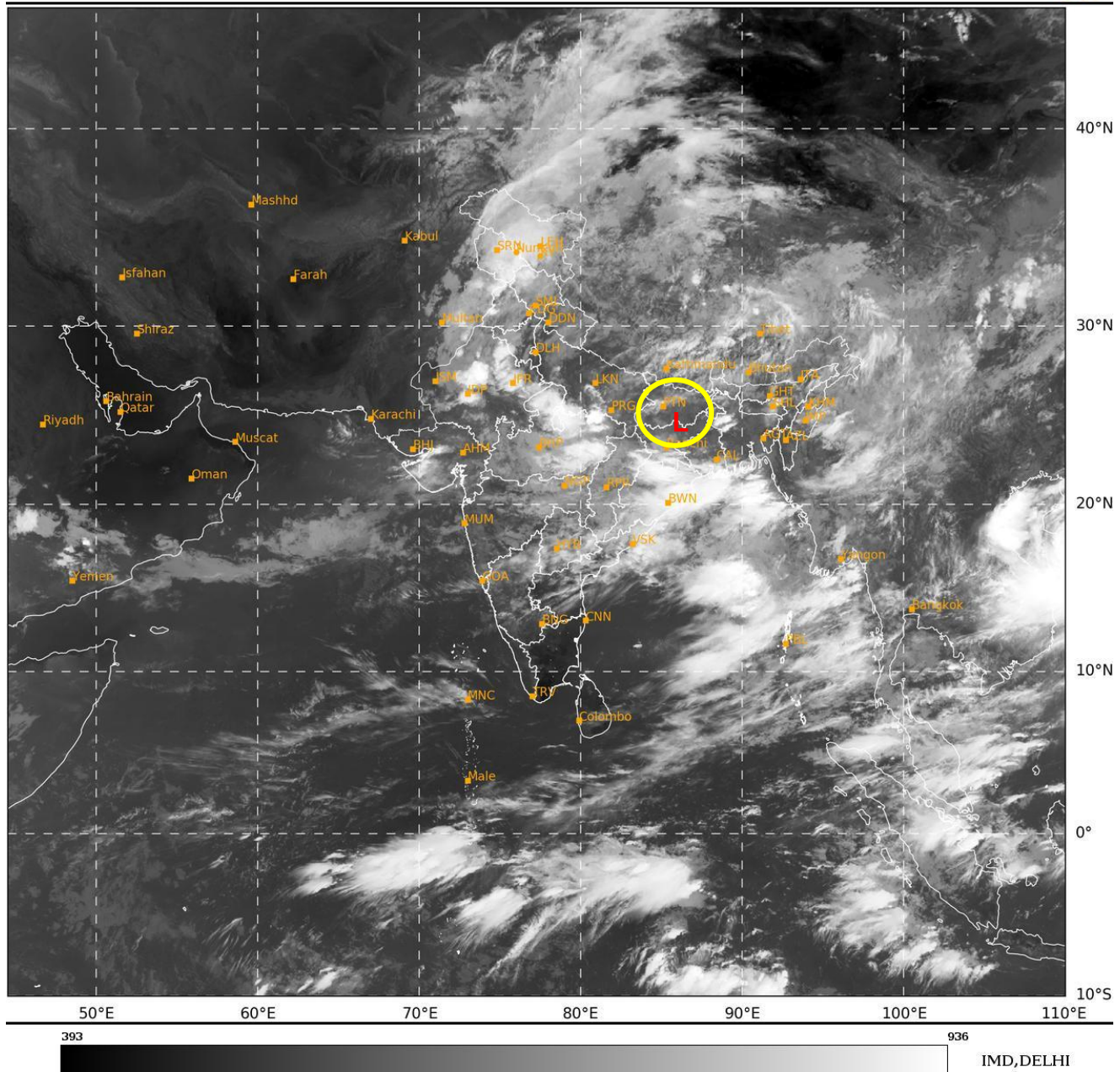
24 HOURS	24-48 HOURS	48-72 HOURS	72-96 HOURS	96-120 HOURS	120-144 HOURS	144-168 HOURS
NIL	NIL	NIL	NIL	NIL	NIL	NIL

***NOTE: EVERY 24HR FORECAST IS VALID UPTO 0300 UTC (0830 IST) OF NEXT DAY**

REMARKS: NIL

SAT : INSAT-3DR IMG
IMG_TIR1 10.8 um
LIC Mercator

24-08-2025/(0315 to 0342) GMT
24-08-2025/(0845 to 0912) IST



L : Low pressure area

Cloud distribution: (a) Isolated: <25%, Scattered:25-50%, Broken: 51-75%, Solid:>75%, Convection Intensity: (a) Weak: Cloud Top Temperature(CTT)>-25°C,(b)Moderate:CTT:-25°Cto-40°C,(c)Intense:CTT: -41°Cto -70°Cand(d)Very Intense::Less than -70°C
PROBABILITYOFCYCLOGENESIS(FORMATIONOFDEPRESSION):NIL:0%,LOW:1-33%,MODERATE:34-66%ANDHIGH:67-100%
ThisisaguidanceBulletinforWMO/ESCAPPanelMembercountries.VisitrespectiveNationalwebsitesforCountryspecificBulletins